

# 1060 Series

## LOW PRESSURE CAPSULE GAUGES

A Heavy Duty low pressure gauge designed for rugged applications throughout general industry, with stainless steel or brass connection.

**Case**

AISI 304 Stainless steel weatherproof construction

**Bezel**

AISI 304 Stainless steel

**Window**

Sheet Glass

**Dial**

Aluminium

**Pointer**

Aluminium with black finish

**Capsule Element**

316 Stainless steel or Beryllium copper

**Movement**

Brass

**Socket (connection)**

316 SS or Brass

**Accuracy**

1.6% F.S. Standard. (1.0% F.S. by request)

**Dial Sizes (mm)**

63, 100, 150. (Also 250 by request)

**Pressure Ranges**

0-1kPa to 0-40kPa

**Overrange**

1.25 x FSD. Higher on request.



**Model 1062**

### ORDERING CODES FOR STANDARD CONFIGURATIONS

**1062 - 100 - 61 - 6P - M (Example Only)**

**Model/Mounting:**

Surface back flange  
Direct bottom connection  
Panel via front flange  
Panel via clamp fixing  
Direct rear connection

**Connection**  
316SS Brass

1161 1061  
1162 1062  
1163 1063  
1164 1064  
1165 1065

**Options:**

Modified

**Connections & Dial Sizes:**

1/8" Connection, 63mm Dial  
2N = NPT, 2P = BSPP, 2T = BSPT

1/4" Connection, 63, 100, 150mm Dial  
4N = NPT, 4P = BSPP, 4T = BSPT

3/8" Connection, 100, 150mm Dial  
6N = NPT, 6P = BSPP, 6T = BSPT

1/2" Connection, 100, 150mm Dial  
8N = NPT, 8P = BSPP, 8T = BSPT

**Dial Size in mm:**

63  
100  
150

**Range:**

See range codes below

### STANDARD kPa SCALE RANGES and ORDERING CODES

Range	Order Code	Range	Order Code
-1.6 to 0 kPa	59V * **	0/1.6 kPa	59 * **
-2.5 to 0 kPa	60V	0/2.5 kPa	60
-4.0 to 0 kPa	61V	0/4.0 kPa	61
-6.0 to 0 kPa	62V	0/6.0 kPa	62
-10 to 0 kPa	63V	0/10 kPa	63
-16 to 0 kPa	64V	0/16 kPa	64
-25 to 0 kPa	65V	0/25 kPa	65
-40 to 0 kPa	66V	0/40 kPa	66

COMPOUND RANGES / NON-STANDARD SCALES AND OTHER UNIT DESIGNATIONS ARE AVAILABLE ON REQUEST

\* NOT AVAILABLE IN MODEL 1064/1164

\*\*Available in all Stainless Steel only

## COMMON AVAILABLE OPTIONS

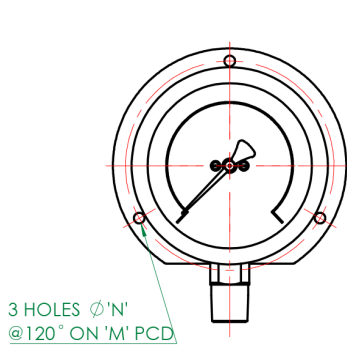
**Window  
Special Scales**

Laminated Safety Glass, Perspex, Polycarbonate  
psi, bar, kg/cm<sup>2</sup>, Tons etc. Dual Scale, Fineline, Colour Sectors/ lines,  
mbar and pascals

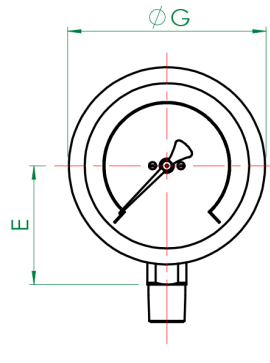
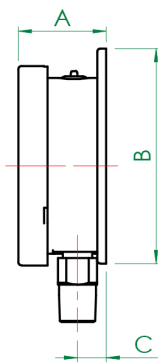
**Restrictors  
Case/Bezel  
Certification**

0.4 and 0.9mm bore  
316 Stainless steel safety pattern configuration  
N.A.T.A. or Ambit In-House

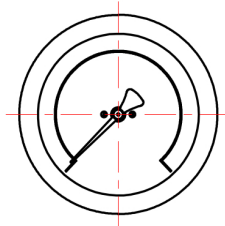
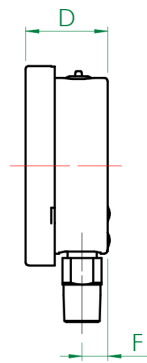
## DIMENSIONS



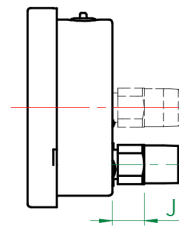
**MODEL 1061 / 1161  
SURFACE MOUNTED**



**MODEL 1062 / 1162  
DIRECT MOUNTED (STANDARD)**



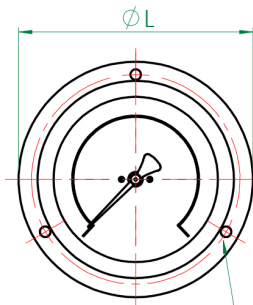
**MODEL 1065 / 1165  
DIRECT MOUNTED - REAR CONNECTION**



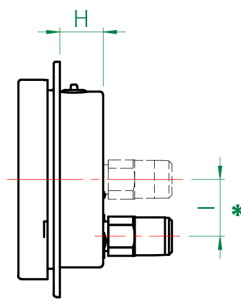
CENTRE BACK

LOWER BACK

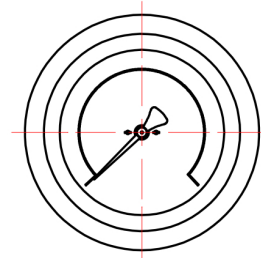
(DEPENDANT ON RANGE & MATERIALS.)



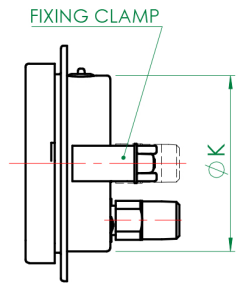
**MODEL 1063 / 1163  
FLUSH MOUNTED - SCREW FIXING**



3 HOLES Ø'O' CSK  
@120° ON 'M' PCD



**MODEL 1064 / 1164  
FLUSH MOUNTED - CLAMP FIXING**



FIXING CLAMP

General Arrangement Dimensions in mm, tol' ± 1mm																
Dim	A	B	C	D	E	F	G	H	I*	J	K	L	M	N	O	Panel cut-out
2.5" (63mm)	34	78.5	12.5	38	42	9.5	68.5	21.5	18	12.5	62	85	75	3.5	3.8	66
4" (100mm)	50	121	17	48.5	67	15	112	24.5	32	18	99	132.5	118	6	6	106
6" (150mm)	50	174	17	48.5	92	15	162	24.5	32	18	148	185	168	5.8	5.8	153

\* REAR CONNECTION CAN BE EITHER CENTRE BACK OR LOWER BACK (SHOWN) DEPENDANT ON RANGE & MATERIALS.

Sales of ALL products are subject to our General Conditions of Quotation & Supply.  
Technical specifications are subject to change without prior notice.

**AMBIT**  
**INSTRUMENTS PTY LTD**  
ABN 50 005 613 641

Office & Factory | 42 Titan Drive, Carrum Downs, Victoria, 3201, Australia  
Ph: 03 9776 8888 | E: [contact@ambitinst.com.au](mailto:contact@ambitinst.com.au) | W: [ambitinst.com.au](http://ambitinst.com.au)